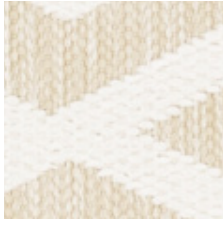
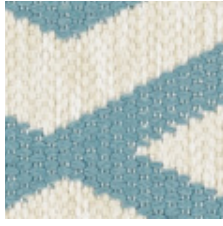


CALITA  
KISO  
NADI  
ARBI

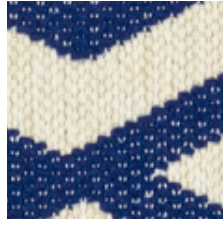
# CALITA



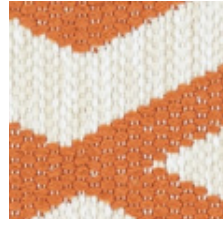
7951-01 Soapstone



7951-04 Surf



7951-03 Neptune



7951-06 Henna



7951-05 Pesto

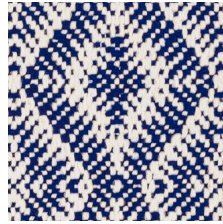
# KISO



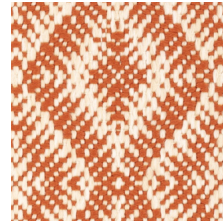
7950-01 Soapstone



7950-05 Surf



7950-04 Neptune



7950-07 Henna



7950-06 Pesto

# CALITA



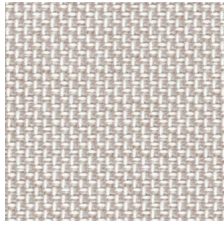
# KISO



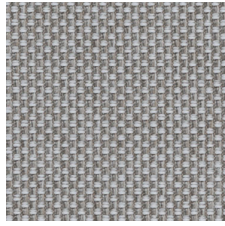
# NADI



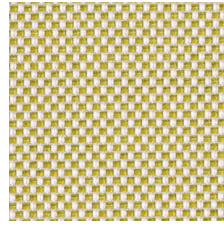
7890-01 Natural



7890-02 Indium

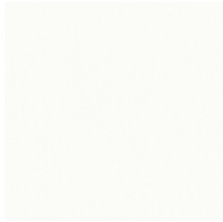


7890-04 Sandpiper



7890-06 Wasabi

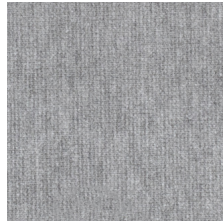
# ARBI



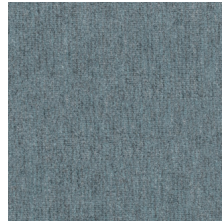
7954-09 Coconut



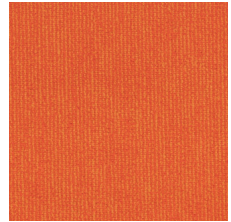
7954-01 Kelp



7954-03 French Grey

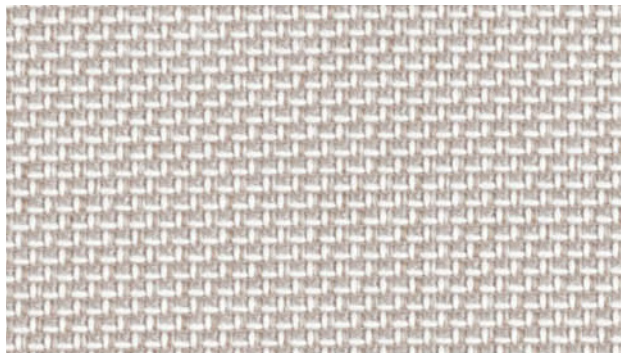


7954-06 Atlantic



7954-07 Henna

# NADI



# ARBI



# CALITA

**Bezugsstoff**

100% Polypropylen

**Charakteristik**

Als auffallendes Design mit grafischer Note und einer überraschenden Haptik bringt dieser zweifarbige geometrische Stoff CALITA einen modernen Touch in Outdoor Bereiche.

**Upholstery fabric**

100% Polypropylen

**Characteristics**

A striking design with a graphic touch and a surprising feel, this two-tone geometric fabric CALITA brings a modern touch to outdoor areas.

# KISO

**Bezugsstoff**

100% Polypropylen

**Charakteristik**

Als raffiniertes, Jacquard gewebtes geometrisches Muster mit schöner Textur bringt KISO klassisches Design in den Outdoor Bereich.

**Upholstery fabric**

100% Polypropylen

**Characteristics**

A sophisticated, jacquard-woven geometric pattern with a beautiful texture, KISO brings classic design to the outdoor area.

# NADI

**Bezugsstoff**

85% Polypropylen, 15% Polyester

**Charakteristik**

Schlicht und vielfältig kombinierbar ist dieser fein gewebte Halb-Uni Stoff NADI perfekt für den Outdoor-Gebrauch.

**Upholstery fabric**

85% Polypropylen, 15% Polyester

**Characteristics**

Simple and versatile, this finely woven fabric half-uni NADI is perfect for outdoor use.

# ARBI

**Bezugsstoff**

85% Polyacryl, 15% Polyester

**Charakteristik**

ARBI, ein unifarbener Outdoor-Velours mit innovativer Qualität, aussergewöhnlicher Haptik und allen praktischen Eigenschaften für den Outdoor Gebrauch.

**Upholstery fabric**

85% Polyacryl, 15% Polyester

**Characteristics**

ARBI, a plain-colored outdoor velour with innovative quality, exceptional feel and practical properties for outdoor use.

